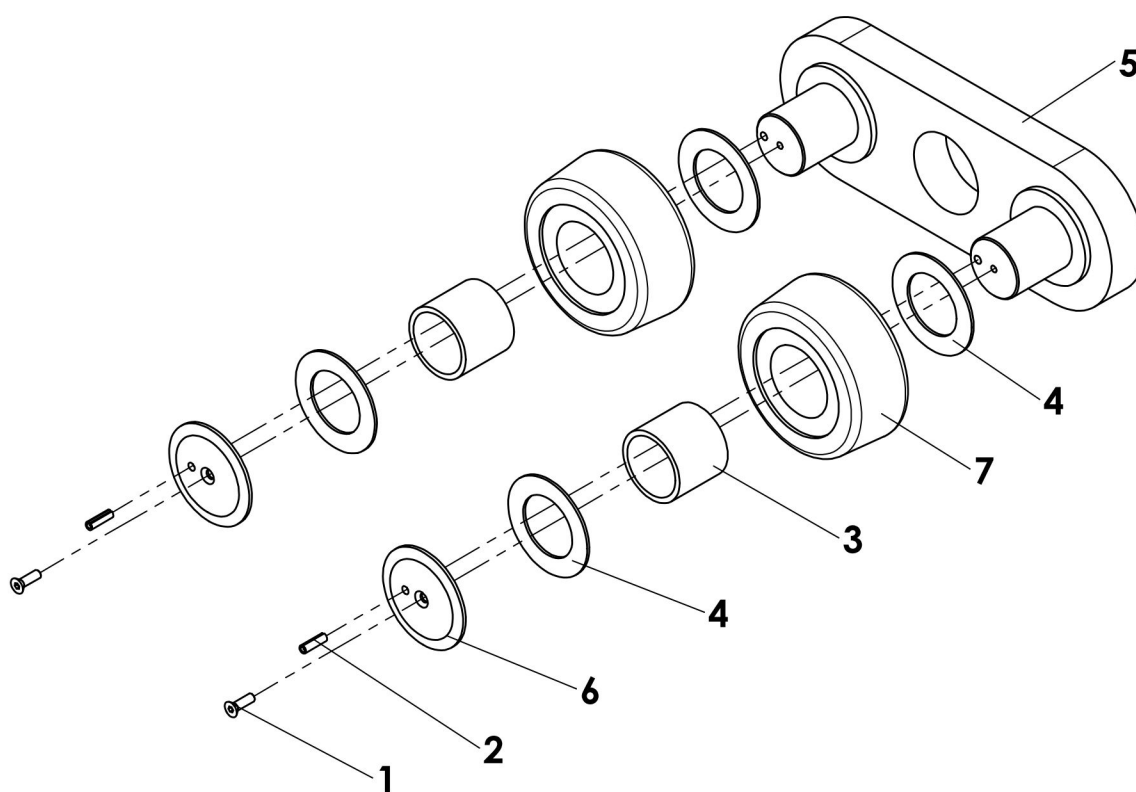
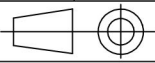


REP	P/N	REV	Désignation FR/EN	Qte
1	3100149	A	VIS TFHC 10x55 SCREW TFHC 10x55	2
2	3500116	/	Goupille élastique Ø6x20 Spring pin stainless Ø6x20	2
3	4200418	REL	BAG GARMAXREF 455345GMGGB BUSHING 455345GM GGB	2
4	4200419	REL	RONDELLE KA REF WC45KA GGB WASHER	4
5	9207440	B	TROLLEY	1
6	9207443	REL	ARRET DE GALET TROLLEY APRON	2
7	9207444	A	GALET DE TROLLEY TROLLEY ROLLER	2



B	Mise à jour du plan -Uptade the plan		24/07/2012	CB	DG	
REV.	DESCRIPTION		DATE	Modified by	Checked by	ID
 Tolérances générales Voir AQIT 008		#	MARQUAGE PIECE P/N + Rev			
Matière	-	Masse (Kg)	Format	Ech.		
Protection	/	15.31	A4	1:5		
ENSEMBLE TROLLEY ENSEMBLE TROLLEY				9207439	B	1/1
				P/N	Rev.	Folio